



LUME 1[®] smart

Battery Parasol Lighting



Instruction manual English

www.lume-1.com | Made in Germany





LUME 1[®] smart

Battery Parasol Lighting

1. SAFETY INSTRUCTIONS

- / The installed power LEDs can shine very brightly shine. Please do not look directly into the light!
- / Please keep distance to electromagnetic relevant objects such as pacemakers, EC cards or other sensitive electronics.
- / The Lume-1[®] smart components are splash-proof on all sides splashproof (IP54), but not absolutely waterproof! Therefore, avoid contact with with any liquids.
- / Sensitive electronics are installed in the components. Despite the very robust design, please handle it with care.
- / Never open the Lume-1[®] smart components yourself, there is a risk of fatal injury from electric shock! If you have any questions or problems, please contact your dealer.

2. SCOPE OF DELIVERY LUME-1® SMART SET OF 2 /4

- / 2 x / 4 x LED strips with splitter cable
- / 1 x Li-polymer Powerbank
- / 1 x battery bag with radio controller
- / 1 x radio remote control
- / 1 x USB charger
- / 1 x mounting set with instruction manual

3. PREPARATION

To get full performance, charge the powerbank completely before using it for the first time. The flashing LED indicates the current charge level. This corresponds to approx. at (see Fig. 1):

LED 1	25 %
LED 2	50 %
LED 3	75 %
LED 4	100 %

Note: Fully charge the battery before first use (approx. 10h)!

If LED 4 stops flashing during charging, the power bank has reached its maximum capacity and switches to trickle charging. The charging time is approx. 8 - 12 hours, depending on the charging current.

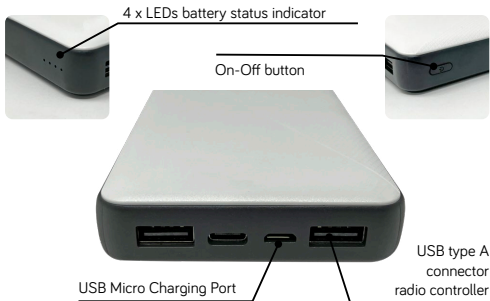


Figure 1

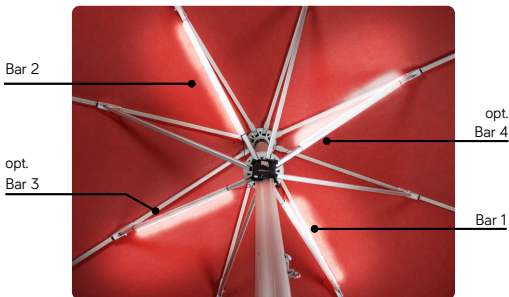


Figure 2

4. ASSEMBLY

We recommend 2 or 4 LED strips per screen, depending on screen size and desired illumination. In order to obtain the optimum illumination, position each strip on the opposite support strut and opposite to each other (see here and in the following Fig. 2). To avoid damaging the screen covering, the LED strips must be attached to the side of the support struts. To do this, position the LED strip with the cable outlet facing inwards in the direction of the mast (if necessary, note the length of the connection cables - extension cables are available in the accessories program for very large parasols, see item 7. OPTIONAL ACCESSORIES). Then carefully screw in the self-drilling screws one after the other using the cordless screwdriver (see Fig. 3). Pre-drilling of the substrate (GRP, aluminum, plastic, wood, etc.) is not necessary. When screwing in the screws on the cable outlet side, make sure that the connection cable is not damaged!



Figure 3

Alternatively, the LED strips can also be mounted with cable ties (see Fig. 4). Make sure that these are tight and that the end pieces of the LED strips cannot slip out of the fastening.



Figure 4

Carefully insert the power bank into the bag with the charge indicator facing forward and the connectors facing down. Insert the USB plug into the USB port of the powerbank (see Fig. 5).



Figure 5

For parasols with fixed strut crown (such as crank parasols with telescopic function), hang the bag below the first strut crown on the parasol pole (see Fig. 6).

For parasols with movable strut crowns (such as push/pull or cable-operated parasols), you must attach the bag to the strut crown itself so that it can move up and down together with the strut crown (see Fig. 7). Pay particular attention to the routing of the cables, so that they are not pinched or stretched too tightly.

Any protruding Velcro tape can be cut off. Then connect the 5-pole cable of the radio controller with the splitter cable and this with the LED strips. Protruding cables can be fixed with the Velcro tape of the bag, or secured with additional cable ties.

Note: When connecting the 5-pole cable with the splitter cable, the arrows must be parallel to each other. → ←



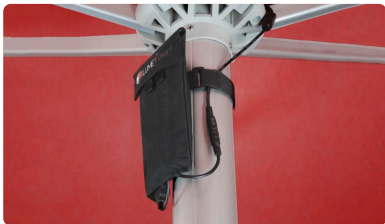


Figure 6



Figure 7

5. OPERATION

Please also observe and read the operating instructions enclosed separately with the powerbank!

By plugging in the wireless controller or by pressing the power switch of the power bank (see here and in the following Fig. 1), it is put into standby mode and displays the current charge level (compare also point 3. PREPARATION). If LED 1 flashes here, the powerbank has reached a critical charge level and should be charged. Otherwise, press the „ON/OFF“ button on the remote control (see Fig.8) and the LED bars will start to light up in the last program used.

To put the Lume-1® smart into standby mode, press the „ON/OFF“ button on the remote control. The LED strips are now off, but the battery permanently displays the current charge level.

Due to the constant standby, a slow discharge of the power bank takes place in standby mode. So if the Lume-1® smart is not needed for a longer period of time, we recommend switching off the powerbank to secure the charge level. To do this, you can simply disconnect the USB cable from the powerbank, it will then switch off after about 30 seconds.

The operating time with 2 LED strips is approx. 15 hours, with 4 LED strips approx. 7 hours.

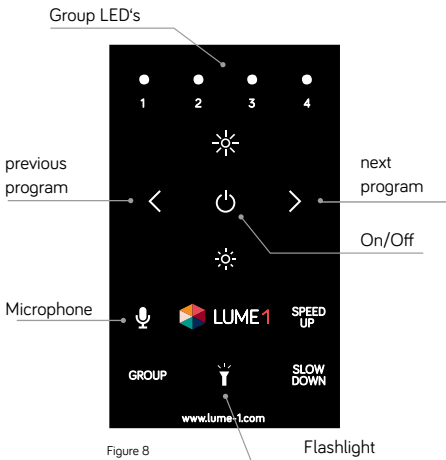


Figure 8

Note: The remote control will enter the power saving mode after some time. Press any button on the remote control to exit the power saving mode.

5.1 ASSIGNMENT OF A GROUP

The Lume-1® smart is compatible with the Lume-1® pro. So you can operate both products in a network and control them together via a remote control! Any number of lights can be assigned to the total of 4 groups. For example, several sunshades can be controlled differently and with only one remote control. In the delivery state, each light is assigned to group 1. Switch on the respective lamp with the „On/Off“ button (see Fig. 8). The currently assigned group will now flash on the remote control for approx. 5 seconds. Now press the „Group“ button repeatedly within this time until the desired new group flashes on the remote control and wait until the flashing light goes out. To reassign a group, press and hold the button on the wireless controller (located inside the battery pouch, see Fig. 9), can be easily felt carefully on the front of the pouch.

5.2 STEUERUNG EINER GRUPPE

Um eine Gruppe anzusteuern, drücken Sie die „Group“-Taste (siehe Abb. 8) auf der Fernbedienung so oft, bis die gewünschte Gruppe auf der Fernbedienung kurz aufleuchtet. Drücken Sie dann eine beliebige Taste und sämtliche Leuchten, welche dieser Gruppe zugewiesen sind, führen die jeweilige Aktion aus. Um alle 4 Gruppen gleichzeitig zu steuern, drücken und halten Sie die „Group“-Taste für ca. 2 Sekunden, bis alle 4 Gruppen kurz aufleuchten.

5.3 LIST OF COLOR PROGRAMS

1	Candlelight Classic	20	Lavender
2	Candlelight Rustic	21	Magenta
3	Soft Amber	22	Neon Pink
4	Blush Pink	23	Coral
5	Lilac	24	Yellow
6	Seafoam	25	Orange
7	Mint	26	Peach
8	Pastel Blue	27	Lime
9	Turquoise	28	Slate Blue
10	Red	29	Moonlight Blue
11	Green		
12	Blue	30	Rainbow
13	Amber		(Automatic Program)
14	Amber White		
15	Warm White		
16	White		
17	Cool White		
18	Violet		
19	Purple		

5.4 CONTROL OF THE COLORS

Color programs, brightness and speed of color changes can be controlled via the respective keys on the remote control (see Fig. 8).

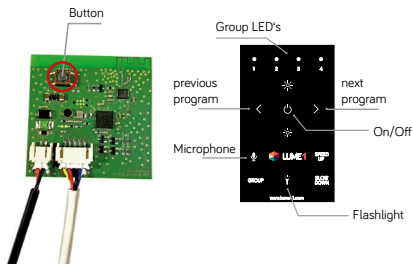
5.5 TON-LICHT-MODUS

Use the „Microphone“ button (see Fig. 8) to activate and deactivate the Sound-To-Light mode. The lights flash or change colors to match the music, depending on the program set (see section 5.3 LIST OF COLOR PROGRAMS).

5.6 PAIRING - Coupling / uncoupling devices

1. Put the light you want to pair into service mode. You can do this by taking the wireless controller out of the inside pocket of the battery bag, or by carefully feeling the button on the front. Make sure the board is connected to the power bank and the LED strips, then press and hold the button on the board for about 5 seconds. The LED strips will turn on first and start flashing blue/white after about 5 seconds. The button can now be released.

- Put all remote controls that you want to pair into service mode. To do this, pull the battery drawer slightly out of the housing. Press and hold the „Flashlight“ button while pushing the battery back into the housing. The 1st and 4th group LEDs now flash alternately.
- To pair, press the „next program“ key on the remote control. The lights will confirm the pairing by flashing green. The remote control will show a running light, from left to right across the group LEDs, to confirm. If the remote control was already paired, the pairing will be extended to the newly added devices.
- To decouple, press the „previous program“ key on the remote control. The lights will confirm the decoupling by flashing red. The remote control will show a running light from right to left over the group LEDs to confirm.
- The service mode can be exited again by pressing the button on the radio controller.



7. OPTIONAL ACCESSORIES

Please observe the enclosed operating and mounting instructions for the use and operation of the original Lume-1® smart accessories.

7.1 CHARGING STATION

With the charging station, up to 6 powerbanks can be charged simultaneously with only one power plug. Thus, the lighting of multiple screens can also be handled easily and ingeniously.



Charging station

7.2 EXTENSION SET

For large screens (from approx. 400 x 400 cm), or if the desired brightness is accordingly, the 2-piece set can be expanded to 4 LED strips. The extension set consists of 2 additional LED strips and a 4-way splitter, which then replaces the 2-way splitter from the Lume-1® smart 2-piece set.



Extension set

7.3 ADDITIONAL POWERBANK

Ensure 24 hours of continuous operation of your Lume-1® smart with an additional powerbank. While you charge one, you can continue to illuminate your shade with the additional powerbank.

7.4 ANTI-THEFT DEVICE

An anti-theft device with combination lock can be installed to secure the powerbank incl. bag. This can possibly be useful for parasols that are difficult to see or far away. For this purpose, the wire rope is looped through the tabs of the bag and around the pole. In this way, the bag can neither be opened nor removed from the mast.



Anti-theft device

7.5 EXTENSION CABLE

For particularly large screens (from approx. 600 x 600 cm), an extension cable may be necessary if the LED strips are positioned accordingly. The splitter cable may then no longer be sufficient to connect the LED strips with the power bank. The extension cables are available in a set of 2 á 50 cm. If an extension set is also in use and thus 4 LED strips per screen, 2 sets of extension cables per screen are required.

7.6 HARDWIRING

The Lume-1® smart can also be permanently installed in your parasol and connected to the power supply. However, this depends on the manufacturer and is not feasible for every type of parasol. Please ask your Lume-1® dealer about this.



LUME 1[®] smart

Battery Parasol Lighting

info@lume-1.com

www.lume-1.com

